

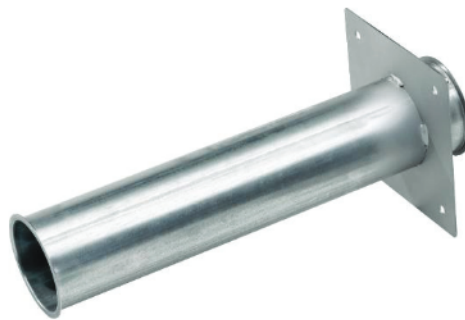
## 8 Beading tube including flange plate

Beading tube (L=500mm) galvanized steel, with a wall thickness of 1mm, both sides upturned edges and flange plate (200x200x2mm) for wall installing.

The tubes can be connected via clamping rings with bends and/or matching couplings.

Couplings with beadings and clamping rings see point **Fehler! Verweisquelle konnte nicht gefunden werden. Fehler! Verweisquelle konnte nicht gefunden werden..**

### 8.1 Straight



Item No.	Type	Dimension [mm]	Tube length [mm]	kg/pcs.	pcs./carton	Drawing No.
14545	BRG-F	100	500	1,6	2	Z14545.01-17-01-DE